

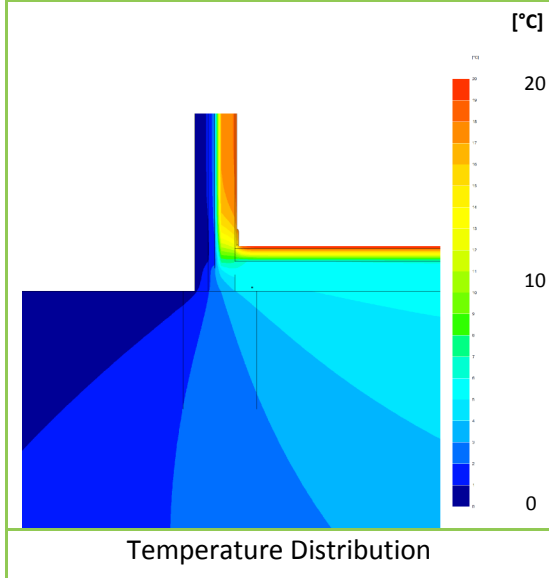
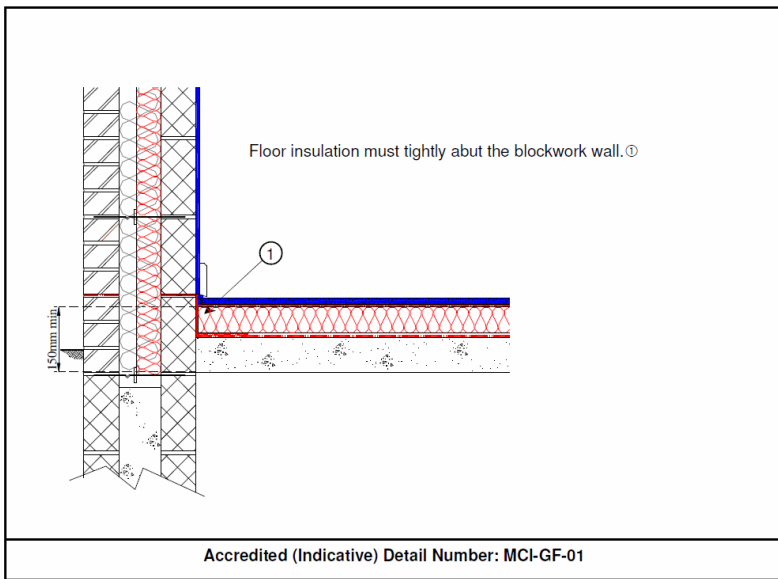
# Linear Thermal Transmittance ( $\Psi$ ) and Temperature Factor ( $f$ )

**Certificate No:** C4TM – 000089 Rev. 1      **Issued:** Wednesday 31 March 2010

*Issued to:*  
Robin Huxley  
Besblock Limited  
Heslop  
Halesfield 21  
Telford  
Shropshire  
UK  
TF7 4NF  
01952 685000

<b>General Construction Specification:</b> (see detail below for full construction)	Main/Load-bearing:	Cellular Aggregate Block, Starperformer
	Insulation:	100mm Mineral Wool, $\lambda=0.036$
	Cavity:	100mm Full fill Cavity
	Cladding:	102mm Brick, $\lambda=0.77$
<b>Description:</b>	<b>Ground Floor, Insulation above Slab, Timber Finish.</b>	
<b>Reference:</b>	<b>MCI-GF-01</b>	

**Junction Detail**



**Linear Thermal Transmittance**  
W/m.K

$\Psi =$       **0.121**

**Temperature Factor<sup>3</sup> for Humidity and Mould**

$f =$       **0.815**

Calculation Prepared By: Matthew Wright MA Physics (Oxon) PGCE

- Notes: -**
- $\Psi$  and  $f$  are only valid for the detail drawn and described above.
  - U-values for the flanking walls are in the range  $U = 0.29 \text{ W/m}^2\text{.K}$ , or less.
  - In dwellings, a temperature factor  $f$  that is  $>0.75$  would avoid the risk of mould growth.
  - Calculations have been performed in accordance with:
    - EN ISO 10211\_2007 (British Standards)
    - IP 1/06 & BR497 (BRE Press)
 and with reference to the following publications:
    - EN ISO 6946 (British Standards)
    - BR443 (BRE Press)