

Certificate No:	C4TM – 000101 Rev. 1	Issued:	Wednesday 31 March 2010
------------------------	-----------------------------	----------------	--------------------------------

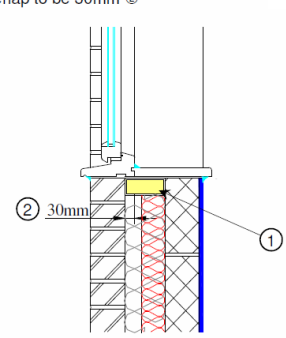
Issued to:
Robin Huxley
Besblock Limited
Heslop
Halesfield 21
Telford
Shropshire
UK
TF7 4NF
01952 685000

General Construction Specification: (see detail below for full construction)	Main/Load-bearing:	Cellular Aggregate Block, Starperformer
	Insulation:	100mm Mineral Wool, $\lambda=0.036$
	Cavity:	100mm Full fill Cavity
	Cladding:	102mm Brick, $\lambda=0.77$
Description:	Windows and Doors, Cills.	
Reference:	MCI-WD-04	

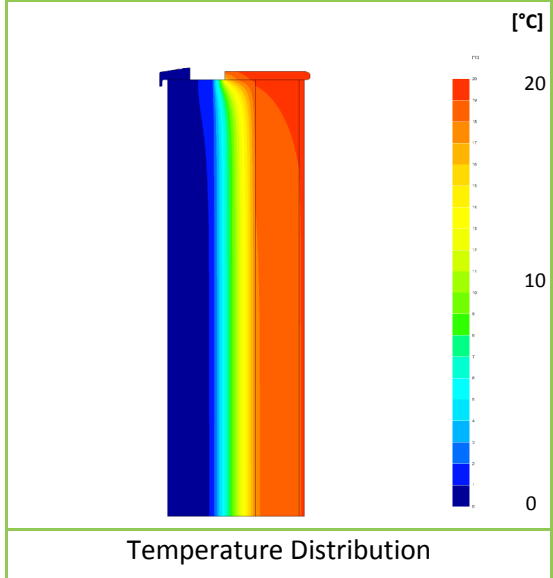
Junction Detail

Install a proprietary cavity closer or block of insulation having a path of minimum thermal resistance path through the closer of not less than 0.45_{m²K/W} (manufacturers certified data). ①

Minimum frame overlap to be 30mm ②



Accredited (Indicative) Detail Number: MCI-WD-04



Linear Thermal Transmittance W/m.K	
$\Psi =$	0.009

Temperature Factor ³ for Humidity and Mould	
$f =$	0.925

Calculation Prepared By: **Matthew Wright MA Physics (Oxon) PGCE**

- Notes: -**
- Ψ and f are only valid for the detail drawn and described above.
 - U-values for the flanking walls are in the range $U = 0.29 \text{ W/m}^2\text{.K}$, or less.
 - In dwellings, a temperature factor f that is >0.75 would avoid the risk of mould growth.
 - Calculations have been performed in accordance with:
 - EN ISO 10211_2007 (British Standards)
 - IP 1/06 & BR497 (BRE Press)
 and with reference to the following publications:
 - EN ISO 6946 (British Standards)
 - BR443 (BRE Press)