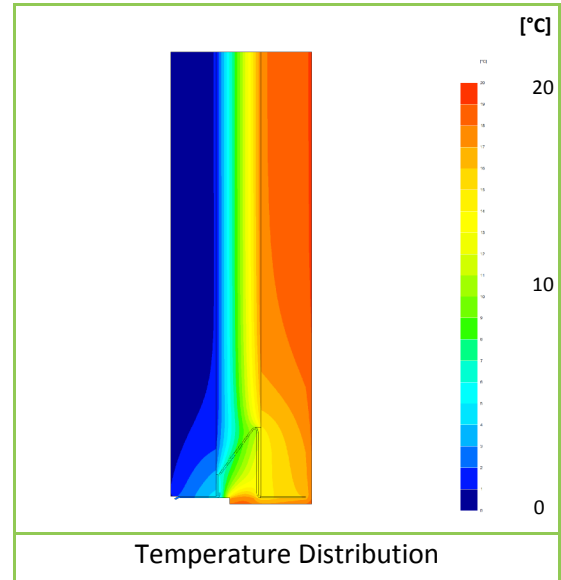
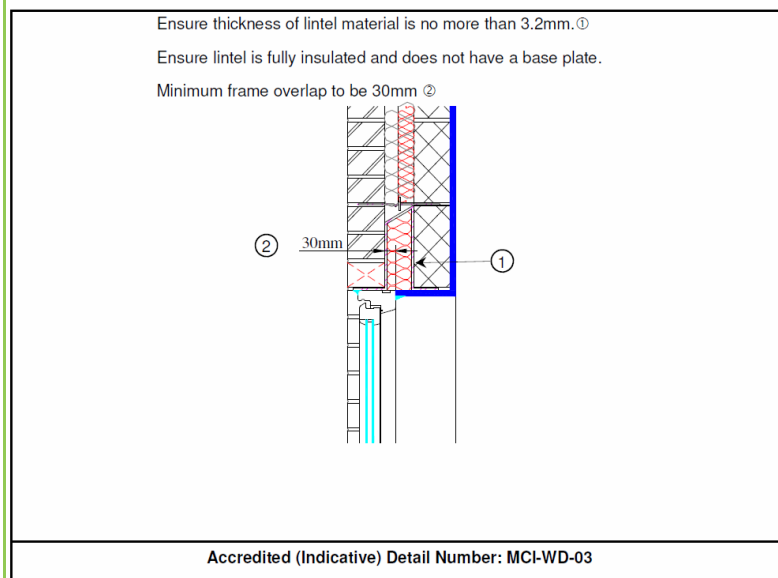


Certificate No:	C4TM – 000294 Rev. 0	Issued:	Wednesday 31 March 2010
------------------------	-----------------------------	----------------	--------------------------------

Issued to:
Robin Huxley
Besblock Limited
Heslop
Halesfield 21
Telford
Shropshire
UK
TF7 4NF
Tel. 01952 685000

General Construction Specification: (see detail below for full construction)	Main/Load-bearing:	Cellular Aggregate Block, Starperformer
	Insulation:	100mm Mineral Wool, $\lambda=0.040$
	Cavity:	100mm Full fill Cavity
	Cladding:	102mm Brick, $\lambda=0.77$
Description:	Windows and Doors, Other Lintels.	
Reference:	MCI-WD-03	

Junction Detail



Linear Thermal Transmittance W/m.K	
$\Psi =$	0.301

Temperature Factor ³ for Humidity and Mould	
$f =$	0.847

Calculation Prepared By: **Matthew Wright MA Physics (Oxon) PGCE**

Notes: -

- Ψ and f are only valid for the detail drawn and described above.
- U-values for the flanking walls are in the range $U = 0.33 \text{ W/m}^2\text{.K}$, or less.
- In dwellings, a temperature factor f that is >0.75 would avoid the risk of mould growth.
- Calculations have been performed in accordance with:
 - EN ISO 10211_2007 (British Standards)
 - IP 1/06 & BR497 (BRE Press)
 and with reference to the following publications:
 - EN ISO 6946 (British Standards)
 - BR443 (BRE Press)