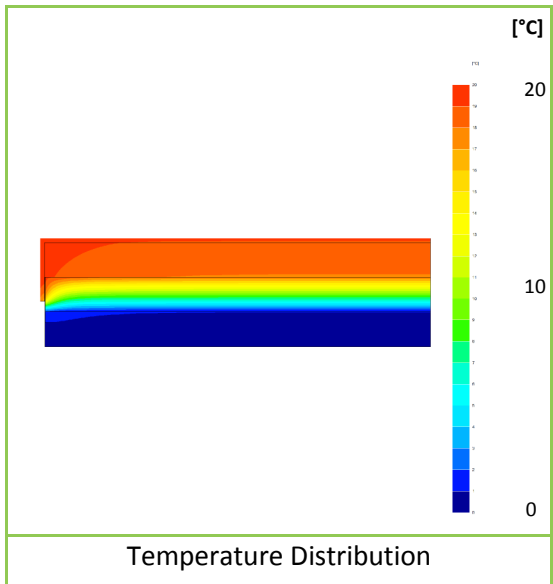
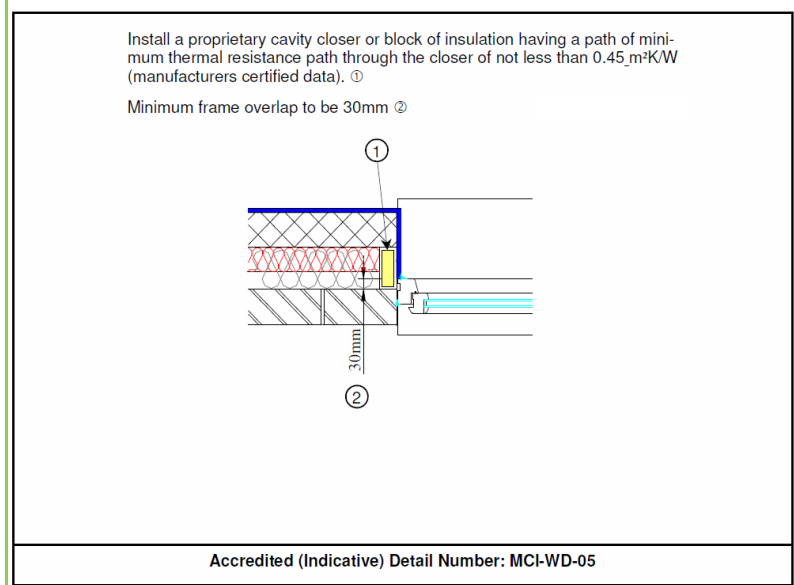


| | | | |
|------------------------|-----------------------------|----------------|--------------------------------|
| Certificate No: | C4TM – 000296 Rev. 0 | Issued: | Wednesday 31 March 2010 |
|------------------------|-----------------------------|----------------|--------------------------------|

Issued to:
Robin Huxley
Besblock Limited
Heslop
Halesfield 21
Telford
Shropshire
UK
TF7 4NF
Tel. 01952 685000

| | | |
|--|---------------------------------|---|
| General Construction Specification: (see detail below for full construction) | Main/Load-bearing: | Cellular Aggregate Block, Starperformer |
| | Insulation: | 100mm Mineral Wool, $\lambda=0.040$ |
| | Cavity: | 100mm Full fill Cavity |
| | Cladding: | 102mm Brick, $\lambda=0.77$ |
| Description: | Windows and Doors, Jamb. | |
| Reference: | MCI-WD-05 | |

Junction Detail



| Linear Thermal Transmittance W/m.K | |
|---------------------------------------|--------------|
| $\Psi =$ | 0.020 |

| Temperature Factor ³ for Humidity and Mould | |
|--|--------------|
| $f =$ | 0.892 |

Calculation Prepared By: **Matthew Wright MA Physics (Oxon) PGCE**

- Notes: -**
- Ψ and f are only valid for the detail drawn and described above.
 - U-values for the flanking walls are in the range $U = 0.33 \text{ W/m}^2\text{.K}$, or less.
 - In dwellings, a temperature factor f that is >0.75 would avoid the risk of mould growth.
 - Calculations have been performed in accordance with:
 - EN ISO 10211_2007 (British Standards)
 - IP 1/06 & BR497 (BRE Press)
 and with reference to the following publications:
 - EN ISO 6946 (British Standards)
 - BR443 (BRE Press)