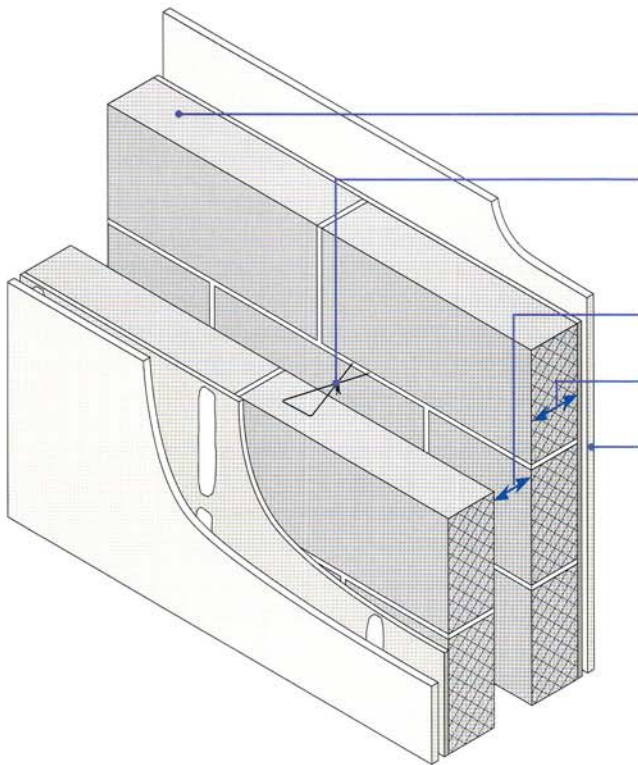


- Dense aggregate blocks ■
- Render and gypsum-based board on dabs ■



- Block density** 1850 to 2300 kg/m<sup>3</sup>
- Wall ties** Approved Document E 'Tie type A' (see Appendix A)
- Cavity width** 75mm (min)
- Block thickness** 100mm (min), each leaf
- Wall finish** Gypsum-based board (nominal 8kg/m<sup>2</sup>) mounted on dabs on cement:sand render (nominal 8mm) with scratch finish  
Typical render mix 1:1:6 to 1:1/2:4. Render mix must not be stronger than background (see Appendix A)
- External (flanking) wall** Masonry (both leaves) with 50mm (min) cavity – clear, fully filled or partially filled with insulation

## DO

- Keep cavity and wall ties free from mortar droppings and debris
- Fully fill all blockwork joints with mortar
- Make sure there is no connection between the two leaves except for wall ties and foundation
- Keep any chases for services to a minimum and fill well with mortar
- Ensure that render is applied to the complete face of each leaf with a scratch finish (it may be omitted within the floor joist/beam zone)
- Refer to Appendix A