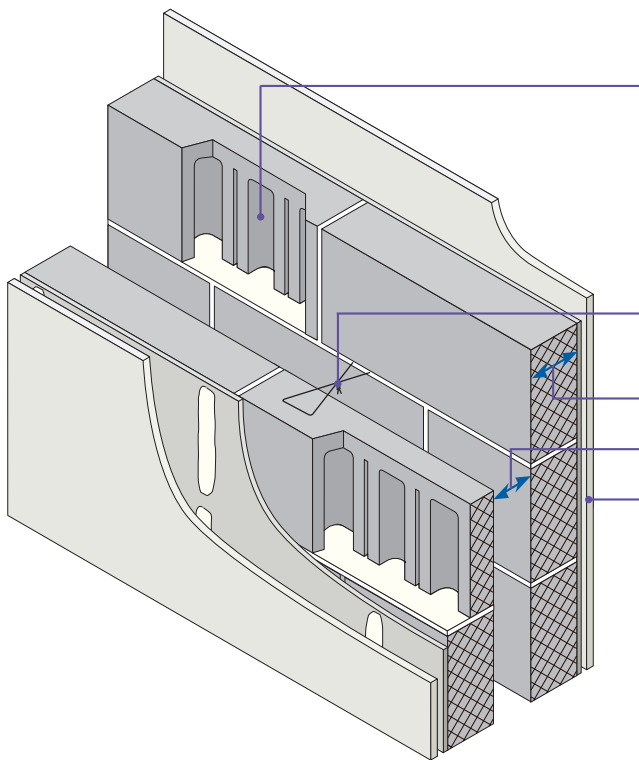


- Besblock “Star Performer” dense aggregate cellular blocks ■
- Render and gypsum-based board on dabs ■



Block	Only Besblock “Star Performer” 5-bridge cellular block (4-core, concrete density 1995 kg/m ³ , block density 1528 kg/m ³ , unit weight 14.5 kg)
Wall ties	Approved Document E ‘Tie type A’ (see Appendix A)
Block thickness	100mm (min), each leaf
Cavity width	75mm (min)
Wall finish	Gypsum based-board (nominal 8 kg/m ²) mounted on dabs on cement:sand render (nominal 8mm) with scratch finish Typical render mix 1:1:6 to 1:1½:4. Render mix must not be stronger than background (see Appendix A)
External (flanking) wall	Masonry (both leaves) with 50mm (min) cavity – clear, fully filled or partially filled with insulation

Alternative internal render specification

Either:

British Gypsum Gyproc Soundcoat Plus (nominal 8mm, minimum 6mm)

or

Knauf Gypsum Parge Coat (nominal 8mm, minimum 6mm)

applied in accordance with the manufacturer's instructions, may be used instead of the cement:sand render mix.

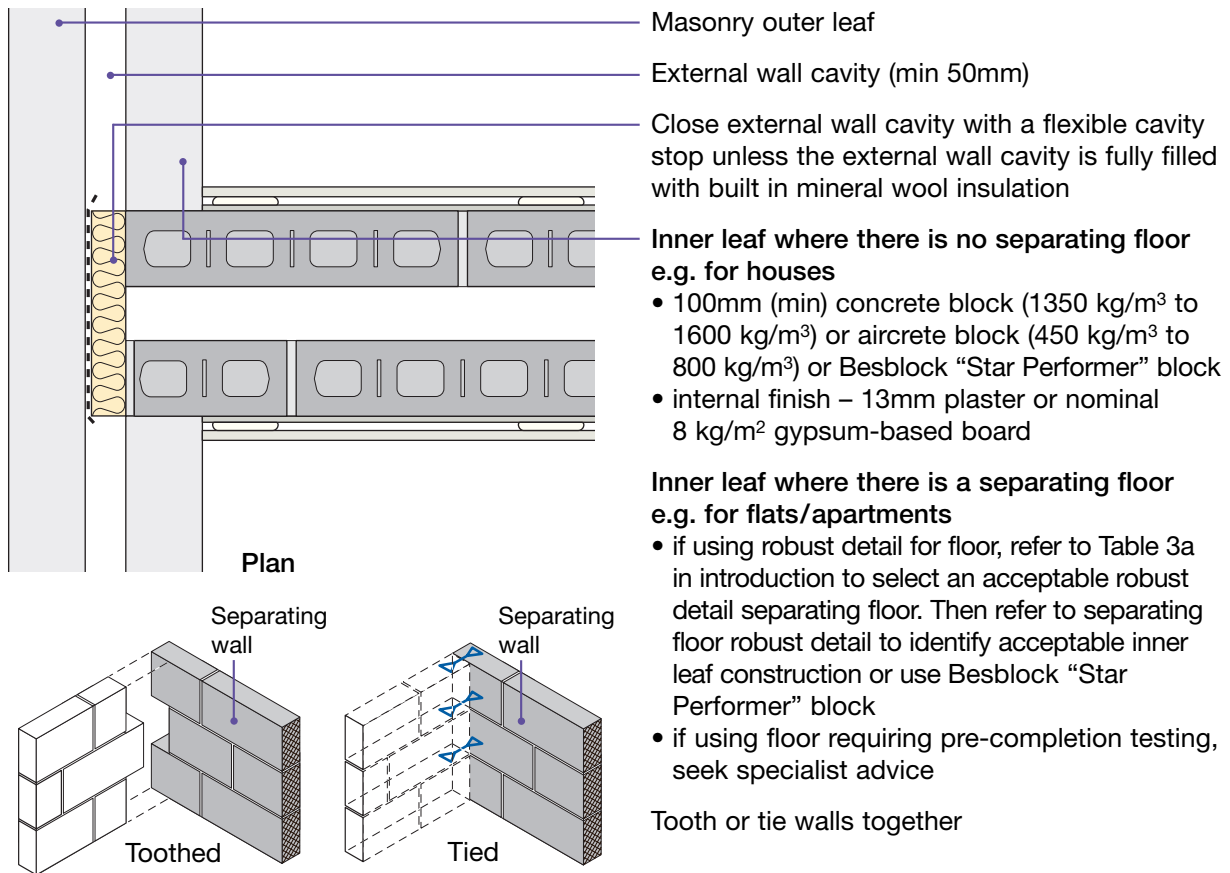
Separating wall cavity insulation (optional)

The cavity may be insulated with mineral wool with a maximum density of 40 kg/m³.

DO

- Place blocks with cellular holes open to lower mortar bed
- Keep cavity and wall ties (and insulation) free from mortar droppings and debris
- Fully fill all blockwork joints with mortar
- Make sure there is no connection between the two leaves except for wall ties and foundation (and insulation)
- Keep any chases for services to a minimum and fill well with mortar. Stagger chases on each side of the wall to avoid them being back to back
- Ensure that render is applied to the complete face of each leaf with a scratch finish (it may be omitted within the floor joist/beam zone)
- Refer to Appendix A

1. External (flanking) wall junction



2. Staggered external (flanking) wall junction

