

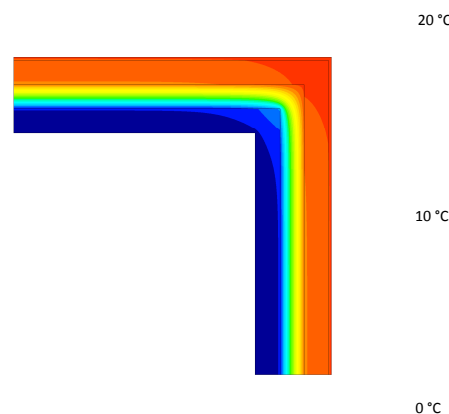
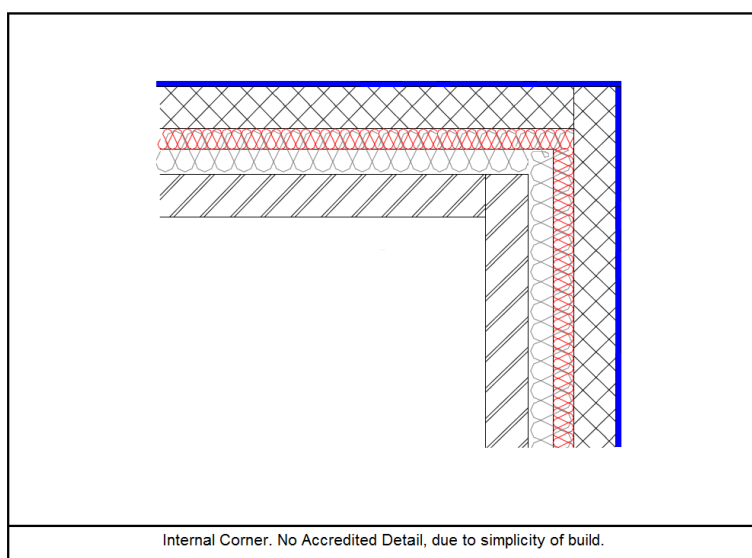
Certificate No: C4TM - 000104 **Issued:** 2 April 2009

Issued to:
Besblock Limited
Heslop
Halesfield Industrial Estate
Telford
Shropshire
TF7 4NF
Tel: 01952 685000

General Construction Specification: (see detail below for full construction)	Load bearing, Inner Leaf:	100mm Star Performer Block
	Insulation:	100mm fullfill Mineral Wool
	Cavity:	100mm fullfill
	Cladding, Outer Leaf:	103mm brick

Description:	Internal Corner
Reference:	Internal Corner: No Accredited Detail

Junction Detail



Temperature Distribution

Linear Thermal Transmittance
W/m.K

$\Psi =$ -0.117

Temperature Factor³ for
Humidity and Mould

$f =$ 0.961

Calculation Prepared By: Matthew Wright MA Physics (Oxon) PGCE

Notes:

- Ψ and f are only valid for the detail drawn and described above.
- U-values for the flanking walls are within the range $U = 0.28 \text{ W/m}^2 \cdot \text{K}$ or less.
- In dwellings, a temperature factor f that is >0.75 would avoid the risk of mould growth.
- Calculations have been performed in accordance with:
 - EN ISO 10211_2007 (British Standards)
 - IP 1/06 & BR497 (BRE Press)
 and with reference to the following publications:
 - EN ISO 6946 (British Standards)
 - BR443 (BRE Press)