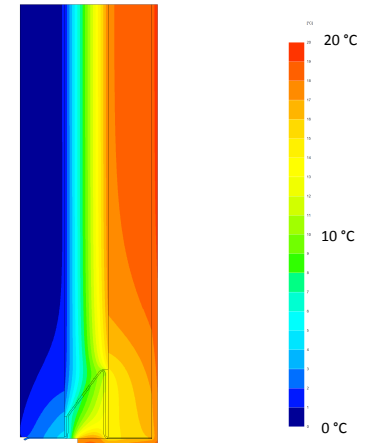
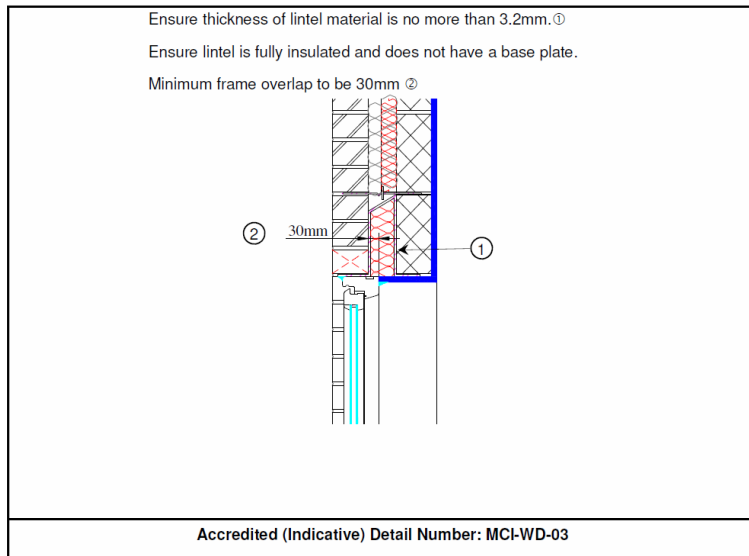


| | | | |
|------------------------|----------------------|----------------|---------------------|
| Certificate No: | C4TM - 000100 | Issued: | 2 April 2009 |
|------------------------|----------------------|----------------|---------------------|

Issued to:
Besblock Limited
Heslop
Halesfield Industrial Estate
Telford
Shropshire
TF7 4NF
Tel: 01952 685000

| | | |
|--|------------------------------------|-----------------------------|
| General Construction Specification: (see detail below for full construction) | Load bearing, Inner Leaf: | 100mm Star Performer Block |
| | Insulation: | 100mm fullfill Mineral Wool |
| | Cavity: | 100mm fullfill |
| | Cladding, Outer Leaf: | 103mm brick |
| Description: | Other Lintel | |
| Reference: | Accredited Detail MCI-WD-03 | |

Junction Detail



Temperature Distribution

**Linear Thermal Transmittance
W/m.K**

$\Psi = 0.305$

**Temperature Factor³ for
Humidity and Mould**

$f = 0.847$

Calculation Prepared By: **Matthew Wright MA Physics (Oxon) PGCE**

Notes:

- Ψ and f are only valid for the detail drawn and described above.
- U-values for the flanking walls are within the range $U = 0.28 \text{ W/m}^2 \cdot \text{K}$ or less.
- In dwellings, a temperature factor f that is >0.75 would avoid the risk of mould growth.
- Calculations have been performed in accordance with:
 - EN ISO 10211_2007** (British Standards)
 - IP 1/06 & BR497** (BRE Press)
 and with reference to the following publications:
 - EN ISO 6946** (British Standards)
 - BR443** (BRE Press)