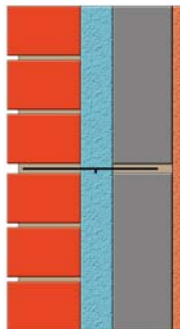


Simple Wall Solutions for Approved Document L1A 2006



Full Fill

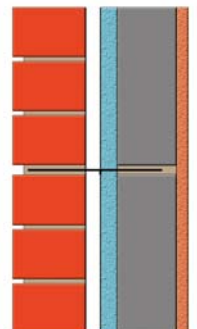
- 103mm Facing Brick
- 100mm Knauf Crown Dritherm Cavity Wall Batts (Lambda 0.036)
- 100mm Besblock Star Performer
- 13mm Plaster or
- 12.5mm Plasterboard on Dabs



u value = 0.29W/m²K

Partial Fill

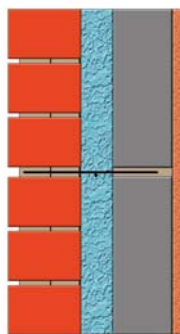
- 103mm Facing Brick
- 50mm (min) cavity
- 50mm Celotex Tough R Rigid Board Insulation
- 100mm Besblock Star Performer
- 13mm Plaster or
- 12.5mm Plasterboard on Dabs



u value = 0.29W/m²K

Full Fill Injected

- 103mm Facing Brick
- 100mm Blown Fibre or Bead Lambda 0.036 (min)
- 100mm Besblock Star Performer
- 13mm Plaster or
- 12.5mm Plasterboard on Dabs



u value = 0.30W/m²K

If the property(s) you are constructing is semi-detached or flats, sound resisting separating walls will be apparent and you must comply with Approved Document E

MORE GOOD NEWS!

If you're building Semis or Flats, use Robust detail E-WM-5 for the Sound Resisting Separating Walls and **you only need ONE BLOCK ON SITE**. The **Star Performer** will satisfy the requirements of both L1A 2006 and Approved Document E



Besblock

YOU ONLY NEED TO USE ONE BLOCK ON SITE